



# HEALTHY AGEING INNOVATION CLUSTER

## April 2019

WHO definition of Healthy Ageing:  
**“the process of developing and  
maintaining functional ability that  
enables wellbeing in older age”**

This includes a person's ability to;

- meet their basic needs
- learn, grow and make decisions
- be mobile;
- build & maintain relationships
- contribute to society

# Healthy Ageing Innovation Cluster

## Purpose

- Collective of shared interest
  - expertise and skills
- Share information and support knowledge exchange
- Seek & solve demand led challenges
- Host challenge competitions
- Identify funding opportunities
- Build Collaborations

## Activities

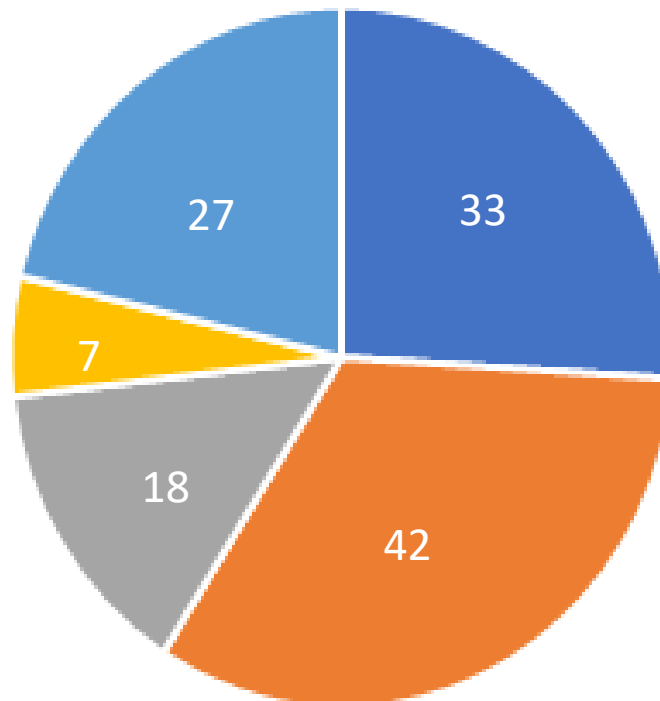
- Current focus on anticipated IUK Grand Challenges – Healthy Ageing but many other funding sources
- Identify key priorities and collaboration opportunities

Facilitated by.....



# HAI Cluster Membership – Feb 2019

Number of Cluster Members



127  
Members

■ Academic ■ Industry ■ Local Authority ■ NHS ■ Other



# Healthy Ageing Innovation Cluster

- **Discussion Session (Feb 2019)**
  - Vision & Impact – what difference are we trying to make collectively?
  - Priorities – what are our key collaboration opportunities?
  - Connecting & Integrating – what useful existing assets/links with other activities & organisations?

# HEALTHY AGEING COLLABORATION PRIORITIES

## KNOWLEDGE EXCHANGE

### Awareness of Policy & Guidance

- Scottish & UK Government – Policy Direction
- Relevant Strategic Guidance & Best Practice
- Team Scotland Approach

### Awareness of Technology

- Consumer Technology
- Keeping pace with a fast moving market
- Build Trust to Share

### Identify Funding Opportunities

## JOINT DEVELOPMENTS

### Shared Focus on Specific Conditions/Challenges

- Falls,
- Diabetes,
- Physical Activity

### Support Independent Living

- Transport
- Housing
- Supporting people to work longer
- Hospital at home
- Care in the Community
- Reducing inequalities

### Develop

- Test beds
- Data/Analytics
- Patient/Citizen Journeys

## RESEARCH & METHODS

### Prevention

- When should interventions best be made?
- Better adoption at earlier stage in life?

### Evidence Impact

- Health Economics
- Methodologies
- Real World Impacts

### Ensure Citizen at the Centre

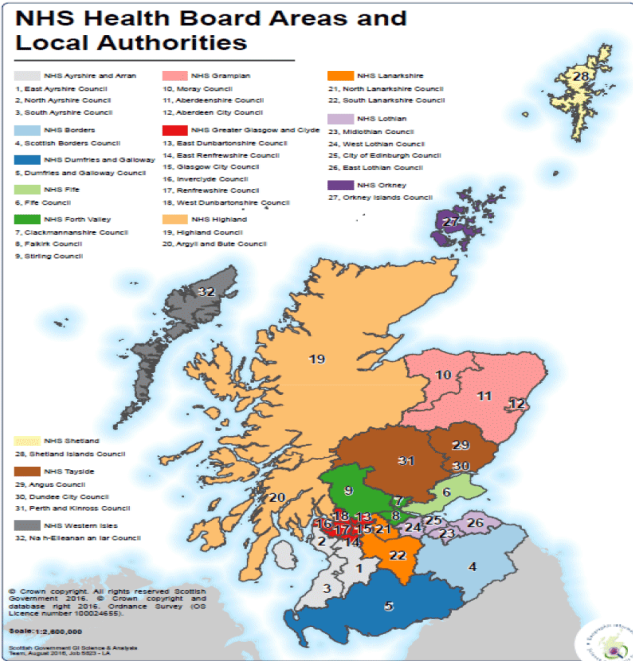
- What does the citizen want?
- How best engage with the end user?
- Co-design
- Build Trust

## SKILLS & CAPABILITIES

### Skills & Training

- Joint Learning

### Business Models for Scotland



# One Test Bed Scotland



Innovation, Commercialisation,  
Translation, Adoption

Investment, Acceleration, Growth,  
Sustainability



# Test Bed Function

*Provide real-world explorations/partnerships, providing advice/testing 'combinatorial' innovation (new combinations of products and processes) aiming to improve patient/citizen outcomes at the same or less cost than current practice; whilst supporting economic growth*



# ACTIVITY



- **Supply led Innovations-** Procurement Accelerator, Health Inr Partnerships, Supplier Feedback Forums, Academic Translation, Enterprise sponsored Inward Investments etc
- **Demand Led Innovations-** SBRI, Hackathons, Innovation Partnership, Open Innovation Projects
- **Internal Innovations-** SHIL, Innovation Hubs, Health and Social Care Partnership Award Schemes, Clinical Entrepreneurs etc
- **Investment Incentivised Innovations-** Banks, UK Industrial Strategy Funds, Investor Led, City Deal etc

OFTEN CROSS OVER

## Industrial Strategy Challenge Fund



# Example: NHS Greater Glasgow and Clyde COPD

SCOTLAND  
CAN DO



# AI and Diagnostics

## iCAIRD

Industrial Innovation in Artificial Intelligence and Digital Diagnostics

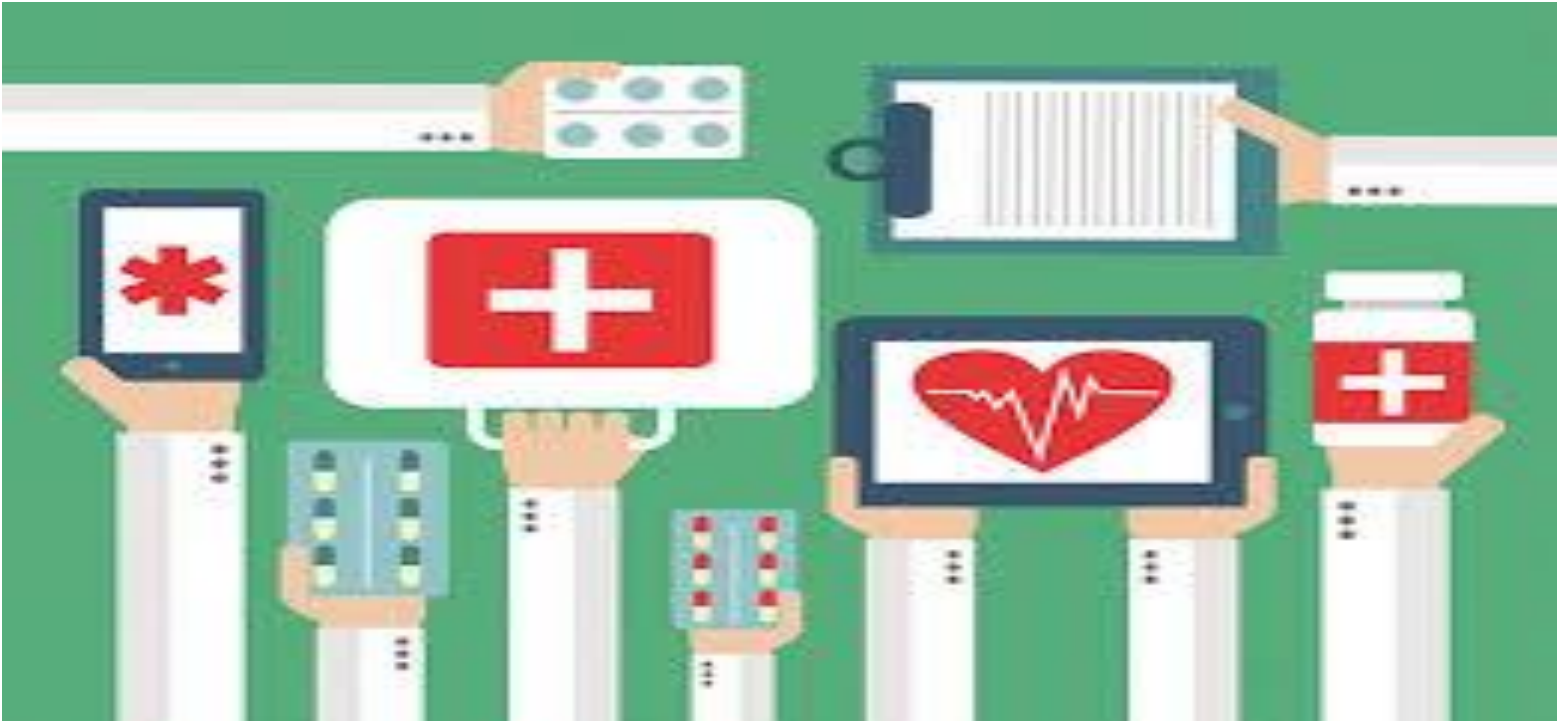


28 February 2019



**PHILIPS** **Canon**

# HEALTH AND SOCIAL CARE CATALYST- Demand Led Innovation Programme



# Examples

- I. Diabetes and data enabled in patient care
- II. Mental Health AI and triage
- III. COPD AI Upscaling
- IV. Trauma Network and Ambulance data
- V. Create Scotland's Command Centre-Flow
- VI. Osteoporosis and DEXA scan data
- VII. Falls and Overnight Care
- VIII. Pathology Image matching automation
- IX. AI and Fracture SBRI
- X. Kidney Cancer and Precision Treatments